

## **‘But is it on the critical path?’**

**Notes from an evening seminar held on the 12 May 2005 for the Adjudication Society Seminar in the London office of Ove Arup**

**Speaker**

**Peter Curtis – Ladymead Projects Ltd**

### **Agenda**

- **Introduction to critical path analysis**
- **How its used in practice**
- **Some things for adjudicators to look out for in progress monitoring and reporting**
- **Views on the SCL Delay and Disruption Protocol**

**For further information please contact Peter Curtis:**


**Phone 01483 534 192**

**E mail [petercurtis@ladymeadprojects.com](mailto:petercurtis@ladymeadprojects.com)**

**Web [www.ladymeadprojects.com](http://www.ladymeadprojects.com)**

Slide 1

## Project Planning



**Adjudication Society**  
**12 May 2005**  
**Peter Curtis**  
**Ladymead Projects**

Slide 2

## Agenda

- Introduction to Critical Path Analysis
- How its used in practice
- Some things for Adjudicators to look out for in progress monitoring and reporting
- SCL Delay and Disruption Protocol
- Questions and Answers

© Ladymead Projects

Slide 3

## Ladymead Projects

- Project management and training consultants
  - Helping clients improve the way they manage projects
    - Developing and better processes and procedures
    - Change management
  - Specialist technical support
    - Project planning and delay analysis
    - Risk and value management
    - Project audits, health checks, monitoring
    - Project launch and workshop facilitation
  - Bespoke training courses
  - Dispute resolution
- Course providers for the CIOB Adjudication courses
- [www.ladymeadprojects.com](http://www.ladymeadprojects.com)


© Ladymead Projects

Slide 4

### Why Plan ?

"The great thing about not planning is that failure comes as a complete surprise and isn't preceded by periods of worry and depression."

*Sir John Harvey Jones*




© Ladymead Projects

Slide 5

### Critical Path Analysis

Introduction to Critical Path Analysis

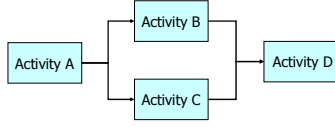


© Ladymead Projects

Slide 6

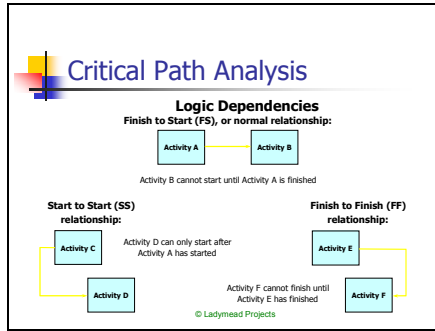
### Critical Path Analysis

Precedence Method (Activity-on-Node)

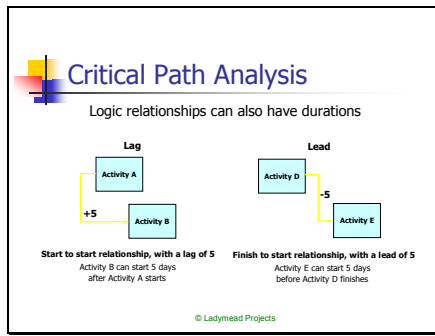


© Ladymead Projects

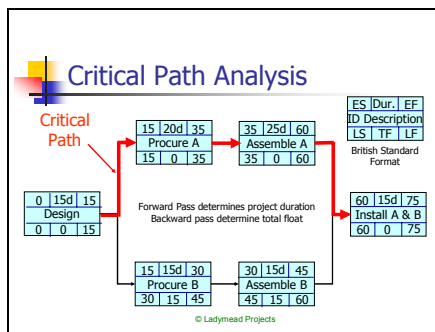
Slide 7



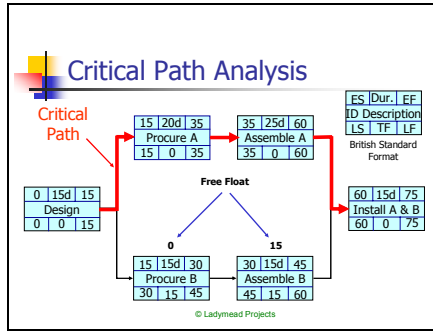
Slide 8



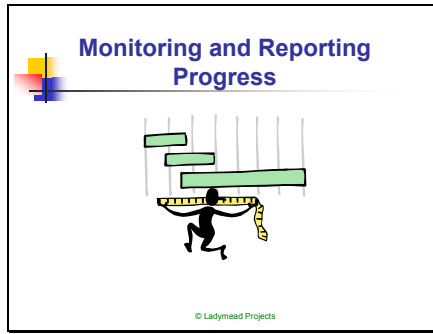
Slide 9



Slide 10



Slide 11



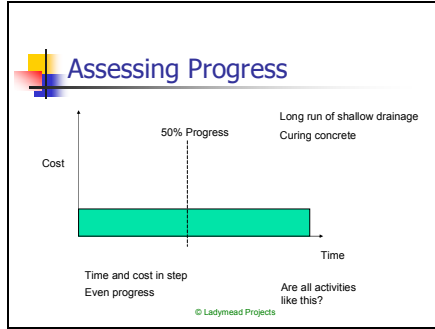
Slide 12

### Progress Monitoring

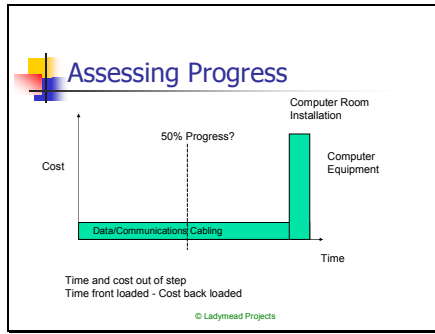
- Is progress monitoring a simple process?
- Here are some of the issues

© Ladymead Projects

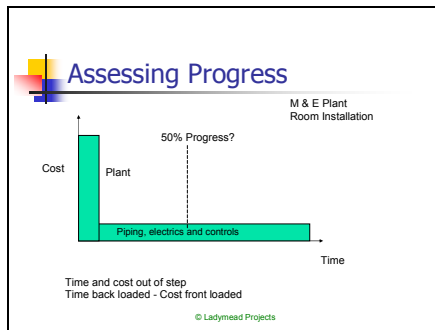
Slide 13



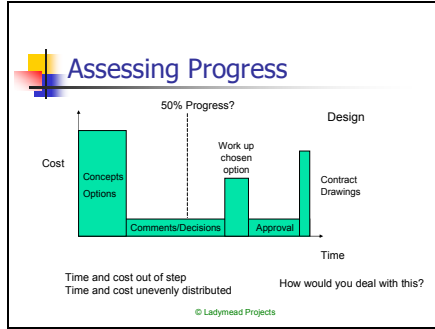
Slide 14



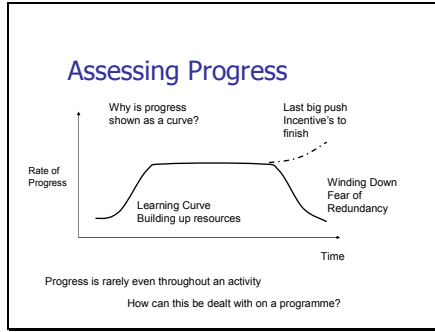
Slide 15



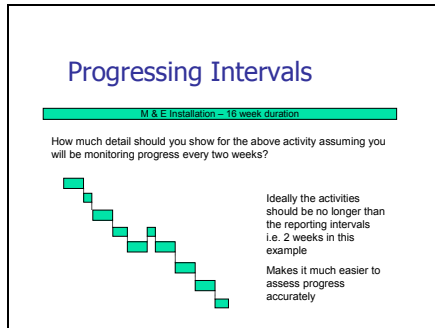
Slide 16



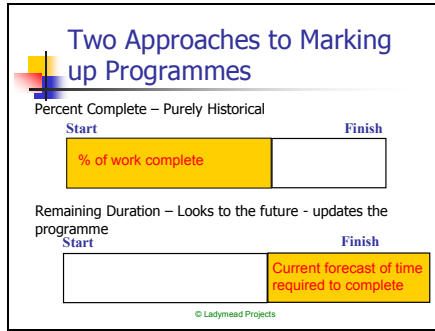
Slide 17



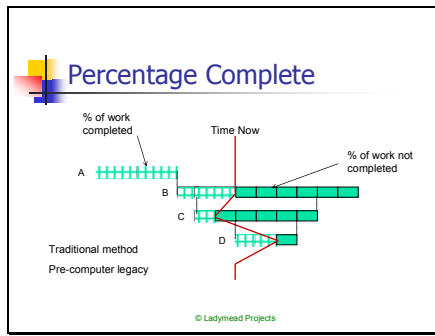
Slide 18



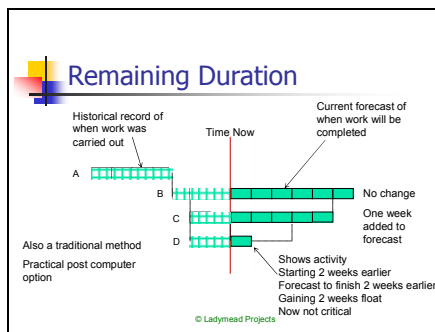
Slide 19



Slide 20

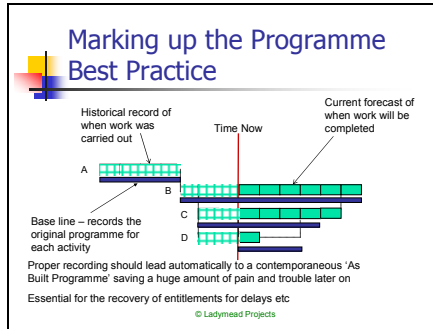


Slide 21

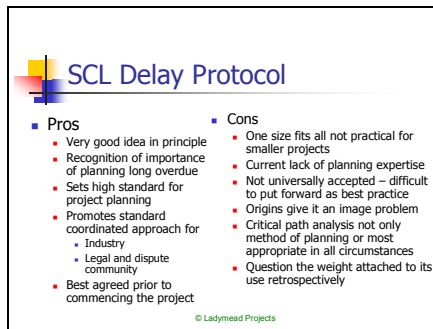




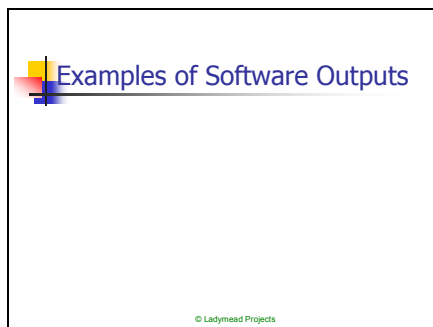
## Slide 22



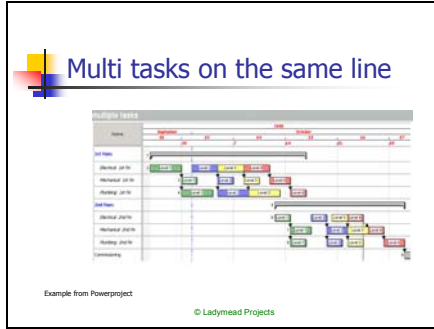
## Slide 23



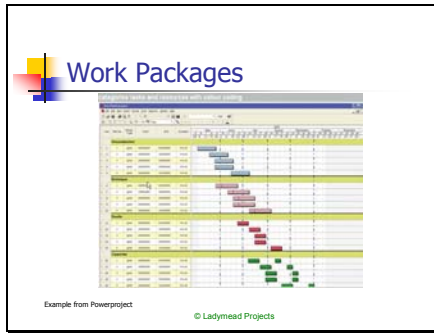
## Slide 24



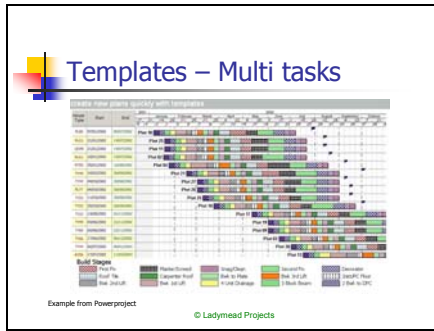
Slide 25



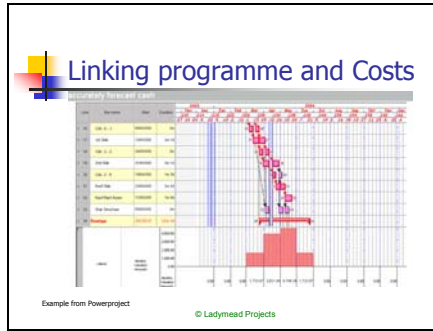
Slide 26



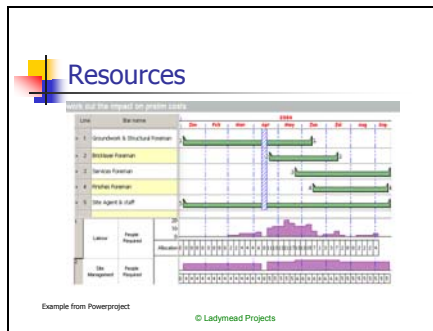
Slide 27



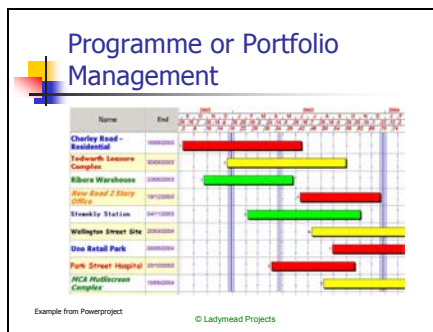
Slide 28



Slide 29



Slide 30



# Slide 31

